



GDAC

August 2017

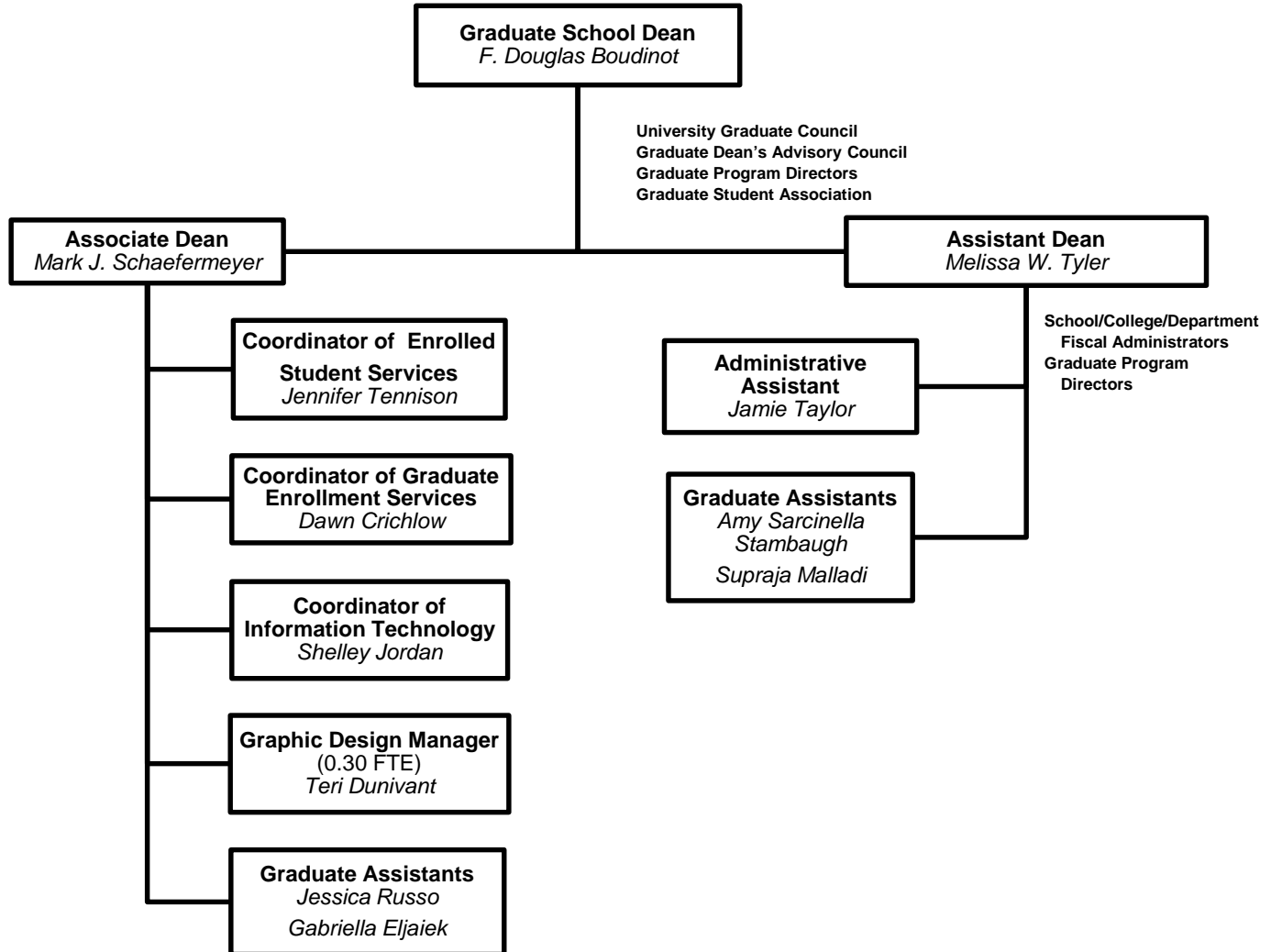


VCU

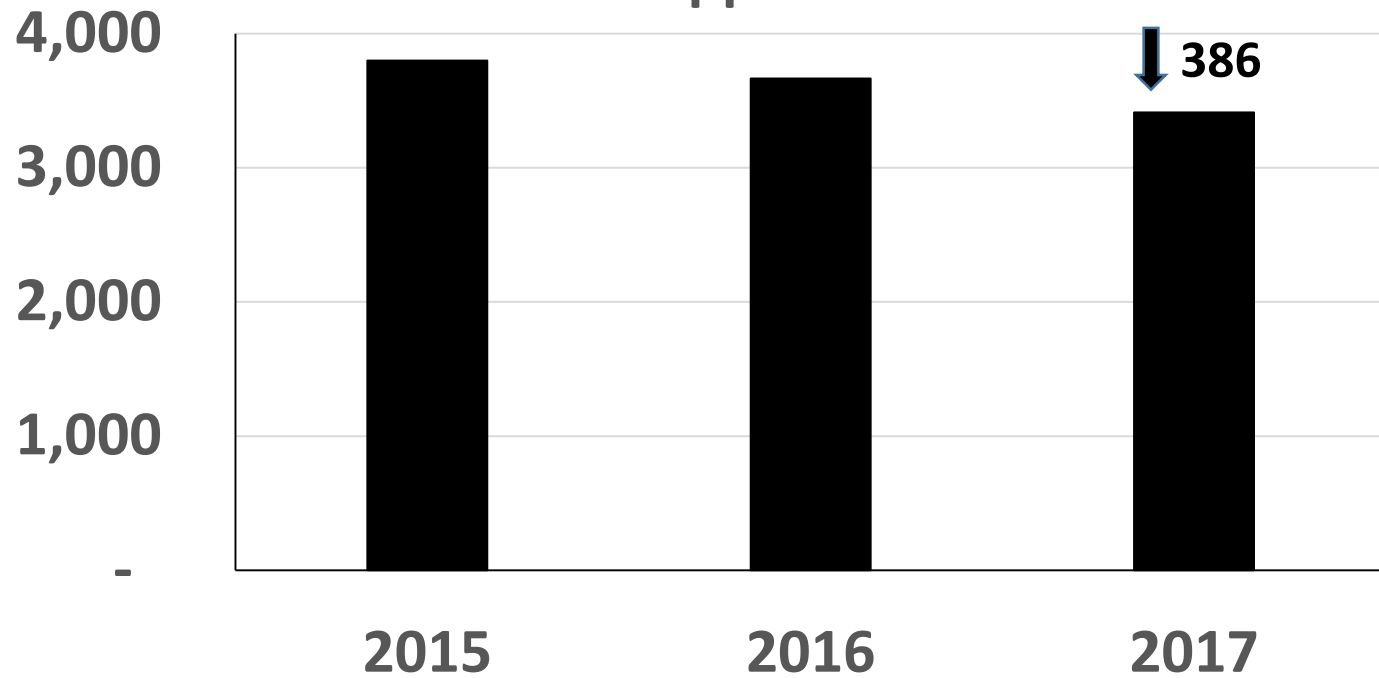
Graduate Dean's Advisory Committee

August 15, 2017

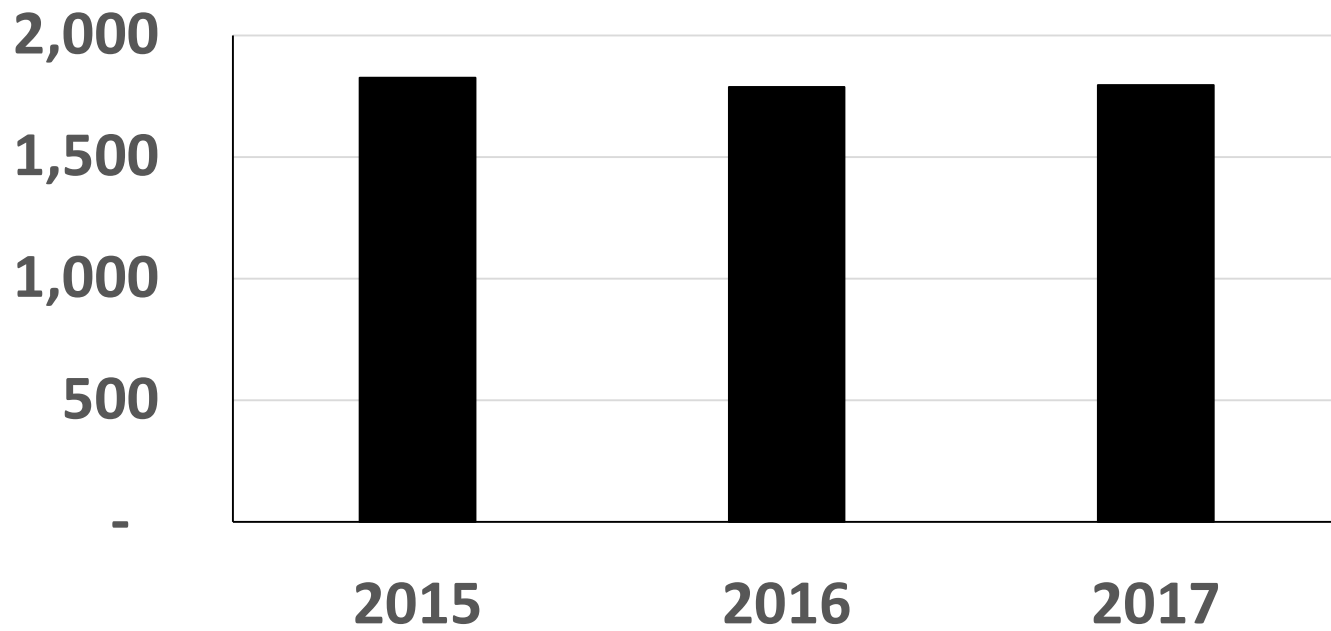
- Jamie Taylor
- Admissions and Enrollment Update
- Proposed Additional Graduate Application Questions
- SREB Doctoral Scholars Program
- Graduate School Diversity and Inclusion Committee
- National Institutes of Health Clinical Center policy modification
- Graduate & Professional School Fair – September 28th, 2017
- Program Directors' Meeting – October 2nd, 2017
 - Graduate Application Review
- Distinguished Thesis award – nominations due by Aug 15th, 2017
- 3MT[®] Competition – October 19th and 20th, 2017
- General Discussion



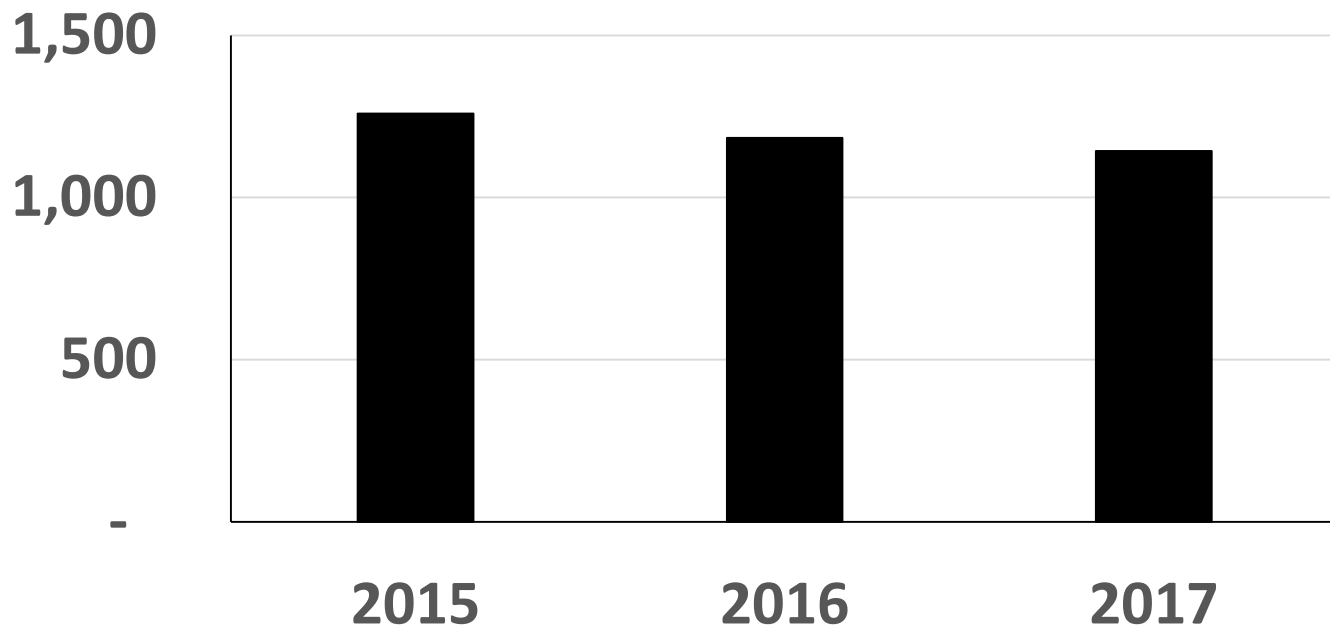
Master's Applications



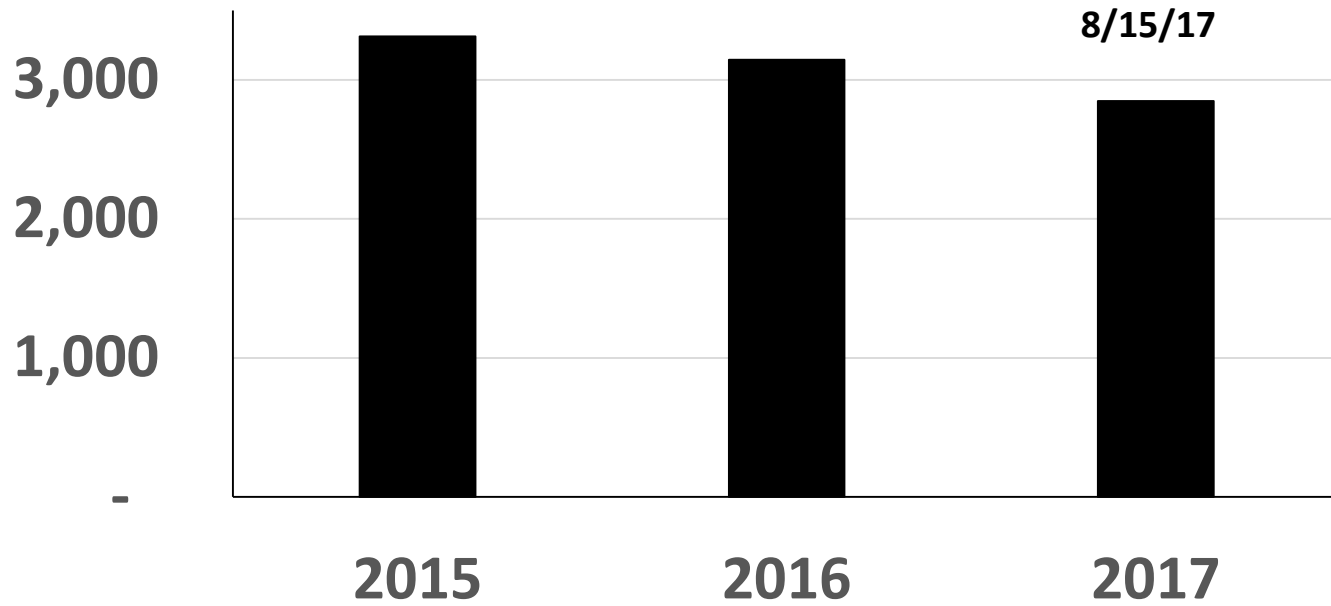
Master's Acceptances



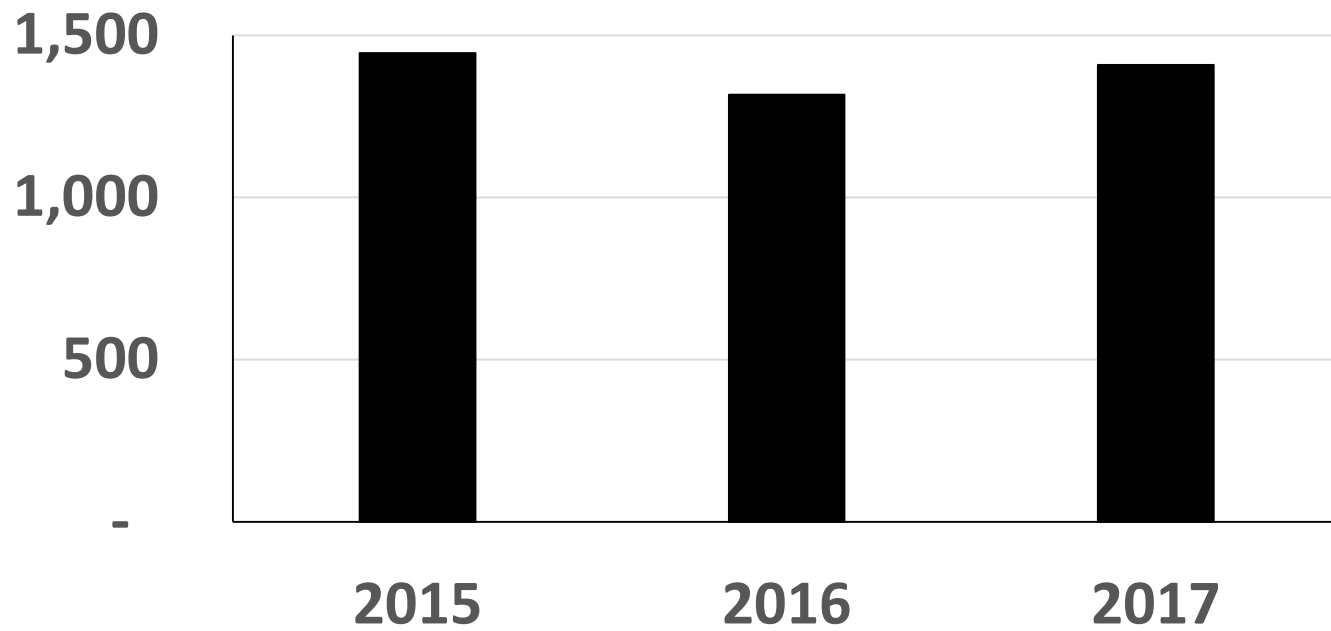
Master's Offers Accepted



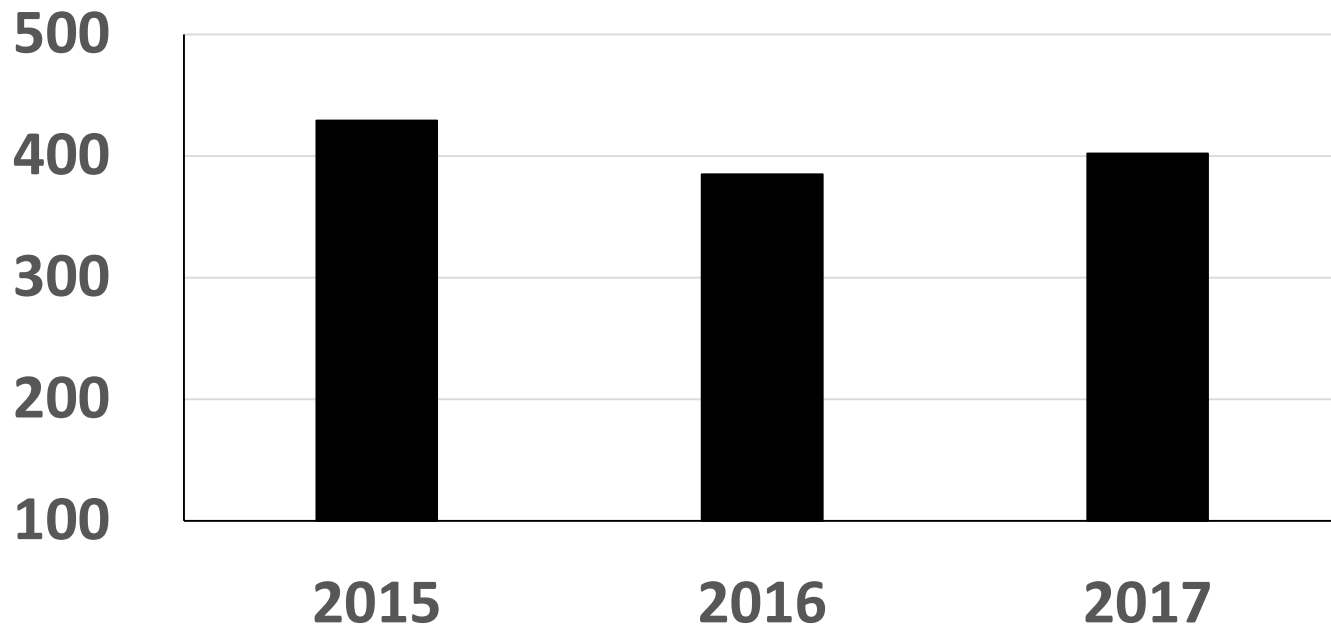
Master's Student Enrollment



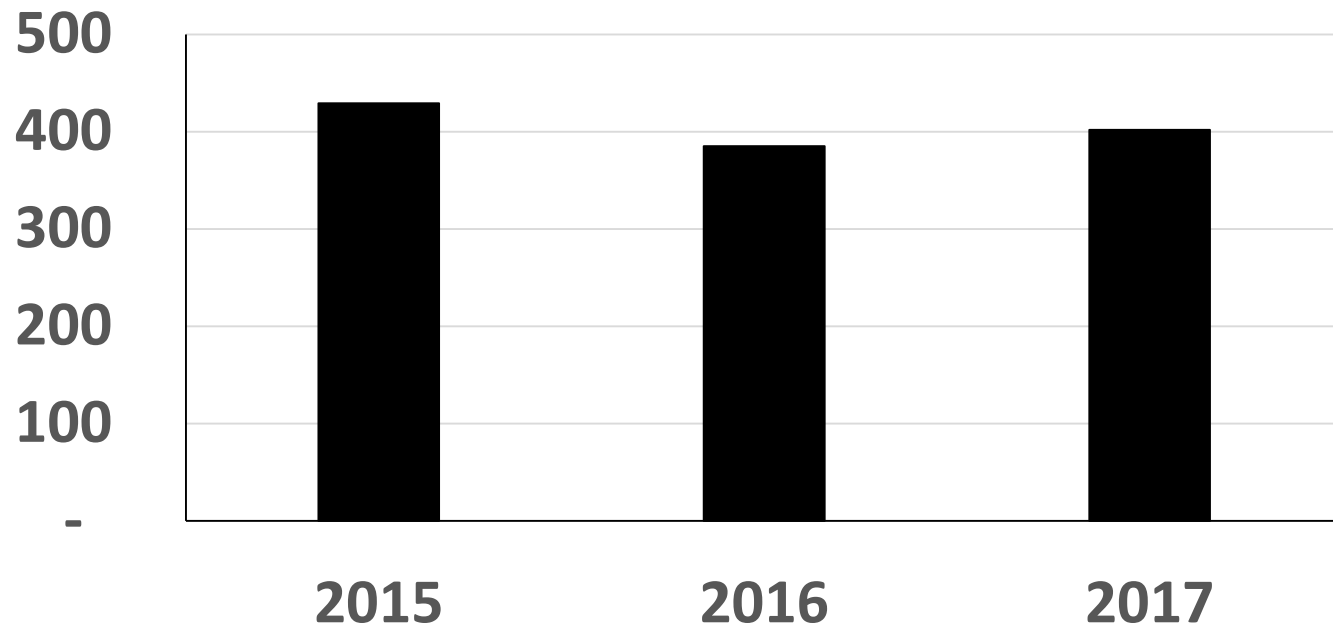
Doctoral Applications



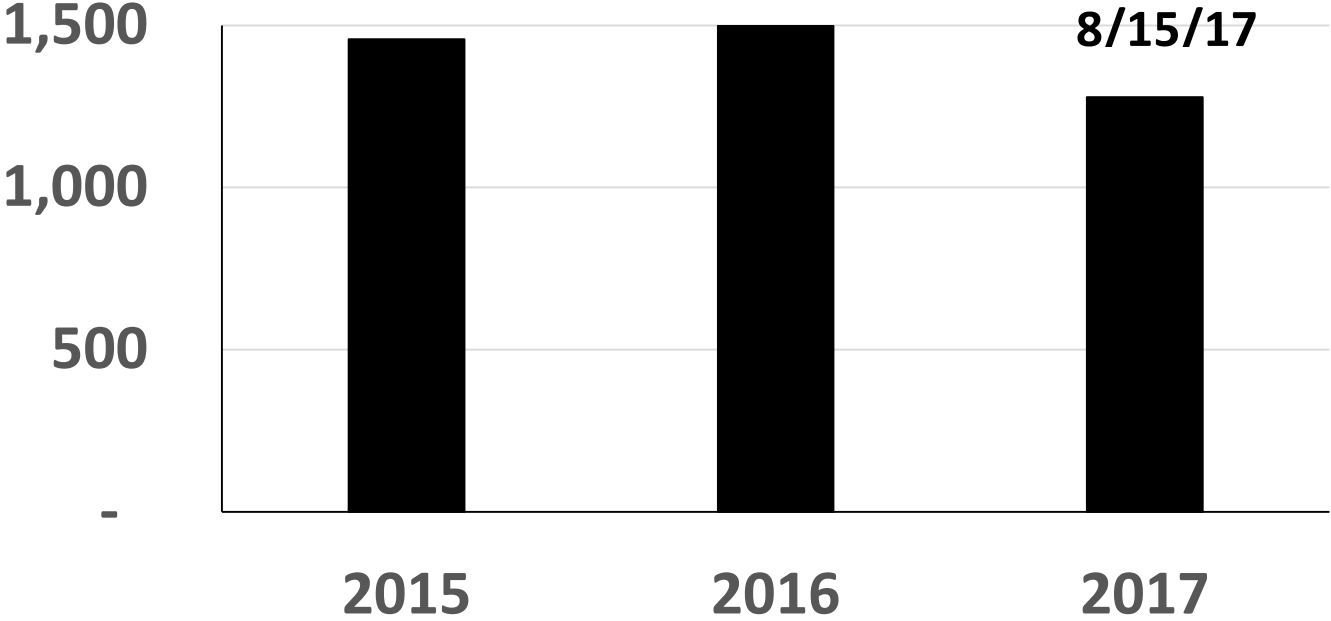
Doctoral Acceptances



Doctoral Offers Accepted



Doctoral Student Enrollment



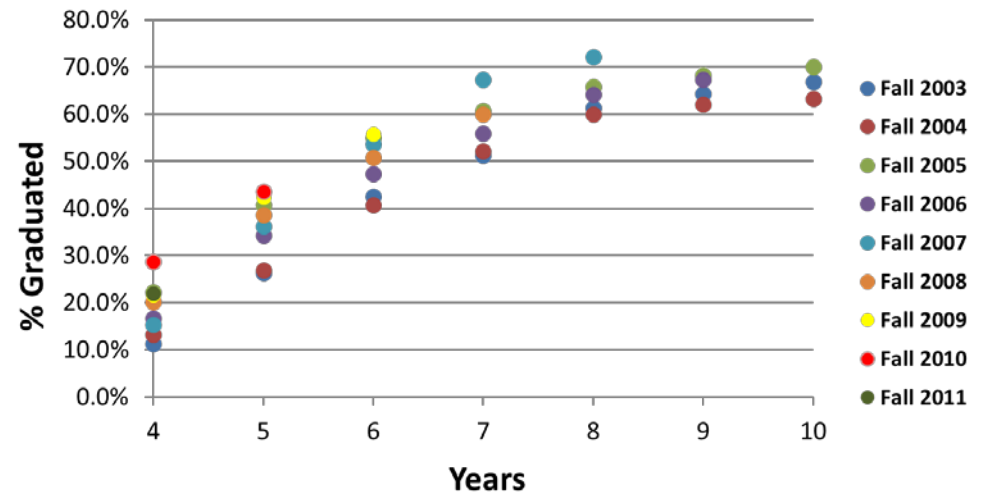
Degrees Awarded 2016-2017

1,455 Master's

306 Doctoral

Median Time to Degree 5.3 y

Fall Doctoral Cohort
Graduation Rates



Graduate Dean's Advisory Committee

August 15, 2017

- Jamie Taylor
- Admissions and Enrollment Update
- Proposed Additional Graduate Application Questions
- SREB Doctoral Scholars Program
- Graduate School Diversity and Inclusion Committee
- National Institutes of Health Clinical Center policy modification
- Graduate & Professional School Fair – September 28th, 2017
- Program Directors' Meeting – October 2nd, 2017
 - Graduate Application Review
- Distinguished Thesis award – nominations due by Aug 15th, 2017
- 3MT[®] Competition – October 19th and 20th, 2017
- General Discussion

Graduate Application Proposed Questions

Question 1 (research experience):

Approximately how many total hours of research experience do you have, outside of classroom or instructional laboratory settings? Examples include but are not limited to: volunteer or paid activities designed to collect data such as field work, laboratory experimentation, or working with a faculty member to collect qualitative or quantitative data through surveys, interviews, or literature-based study. Shadowing or volunteer activities not designed to collect data should not be included.

- A. None
- B. 50-300 (equivalent up to 20 hrs/week for one semester or summer)
- C. 300-1000 (equivalent up to 20 hrs/week for one year)
- D. 1000-2000 (equivalent up to 40 hrs/week or full time for one year)
- E. More than 2000

Question 2 (disability):

Do you have a physical, learning or mental health disability that affects your everyday activities, which cannot be adequately alleviated with appropriate interventions or accommodations?

- A. Yes
- B. No
- C. Do not wish to provide this information

Note: You may choose not to answer this question. This information is requested solely for the purpose of assessing applicant demographics, will be kept confidential, and has no bearing on admission to any VCU program. VCU welcomes students from diverse backgrounds and offers assistance to those with disabilities. Please contact Disability Support Services on either VCU campus for more information.

Graduate Dean's Advisory Committee

August 15, 2017

- Jamie Taylor
- Admissions and Enrollment Update
- Proposed Additional Graduate Application Questions
- SREB Doctoral Scholars Program
- Graduate School Diversity and Inclusion Committee
- National Institutes of Health Clinical Center policy modification
- Graduate & Professional School Fair – September 28th, 2017
- Program Directors' Meeting – October 2nd, 2017
 - Graduate Application Review
- Distinguished Thesis award – nominations due by Aug 15th, 2017
- 3MT[®] Competition – October 19th and 20th, 2017
- General Discussion

Revised NIH Parental Leave Policy

- **Current policy** allows trainees on institutional research training grants (T32, T34, T35, and the NRSA component of T90), and fellows on individual research training fellowships (F30, F31, F32, and F33) to receive stipends for up to 60 calendar days (equivalent to 8 work weeks) of parental leave per year for the adoption or the birth of a child when those in comparable training positions at the grantee organization have access to this level of paid leave for this purpose. Either parent is eligible for parental leave. The use of parental leave must be approved by the training Program Director.
- **Revised policy:** Effective immediately, all Kirschstein-NRSA trainees and fellows may receive stipends for up to *60 calendar days* (equivalent to *8 work weeks*) of parental leave per year for the adoption or the birth of each child. Either parent is eligible for parental leave. **Kirschstein-NRSA trainees and fellows must provide advanced notification to the grantee institution prior to taking parental leave. Notification of supervisors and others about plans to use leave must be consistent with the organization's policy and must be consistently applied regardless of the source of funds.**

Graduate Dean's Advisory Committee

August 15, 2017

- Jamie Taylor
- Admissions and Enrollment Update
- Proposed Additional Graduate Application Questions
- SREB Doctoral Scholars Program
- Graduate School Diversity and Inclusion Committee
- National Institutes of Health Clinical Center policy modification
- Graduate & Professional School Fair – September 28th, 2017
- Program Directors' Meeting – October 2nd, 2017
 - Graduate Application Review
- Distinguished Thesis award – nominations due by Aug 15th, 2017
- 3MT[®] Competition – October 19th and 20th, 2017
- General Discussion