

# Virginia Commonwealth University Graduate School

**1001 Grove Avenue**

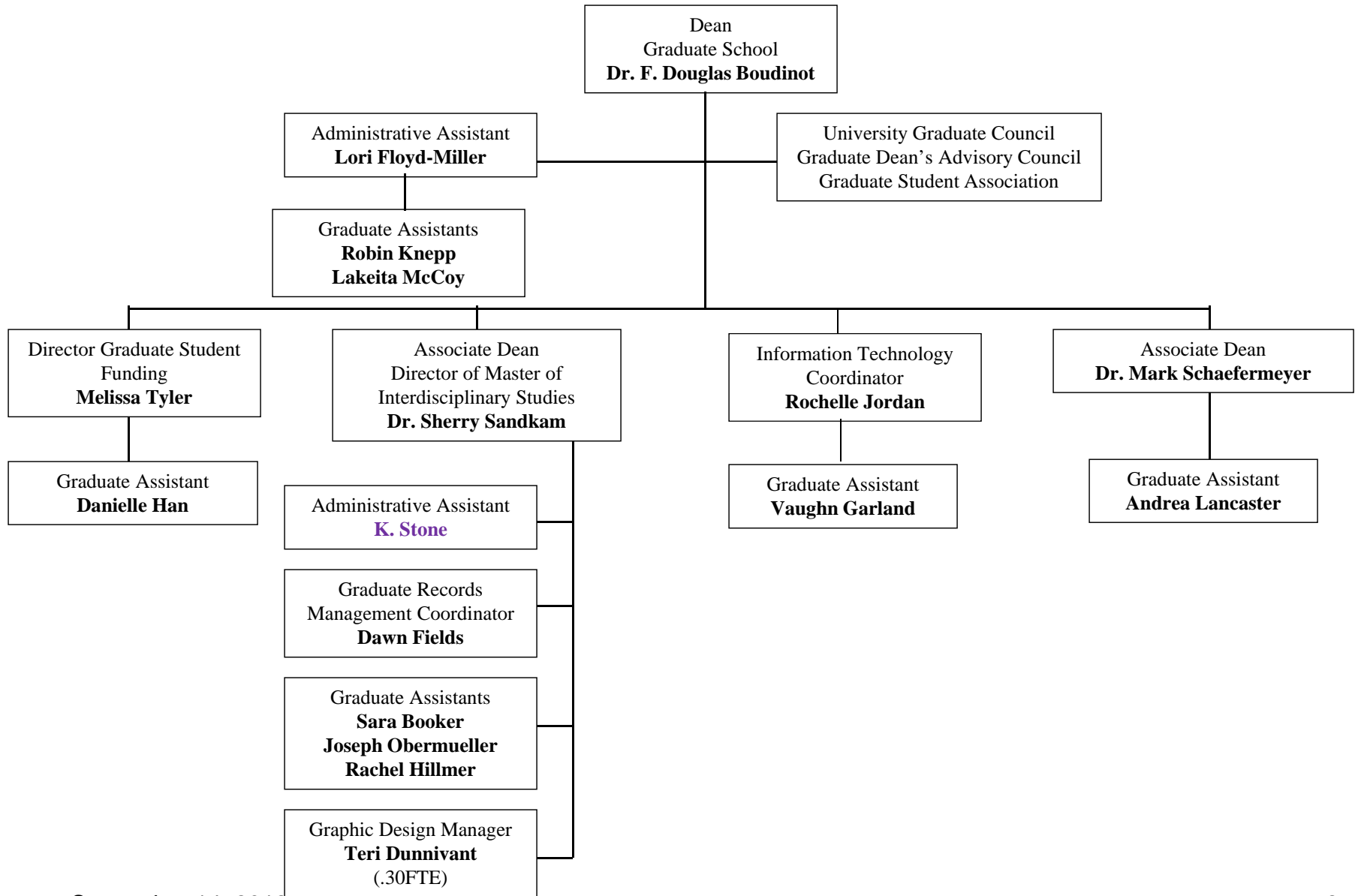
**PO Box 843051**

**Phone: 828-2233**

**[www.graduate.vcu.edu](http://www.graduate.vcu.edu)**



# VCU Graduate School



# Graduate School

Graduate Faculty - 1,052 full; 261 affiliate

Graduate Programs

24 Certificate; 73 Master's; 39 Doctoral Degrees

Graduate Students – 5,845

92% Degree seeking (5,354)

62% Master's, 25% Doctoral, 5% Certificate

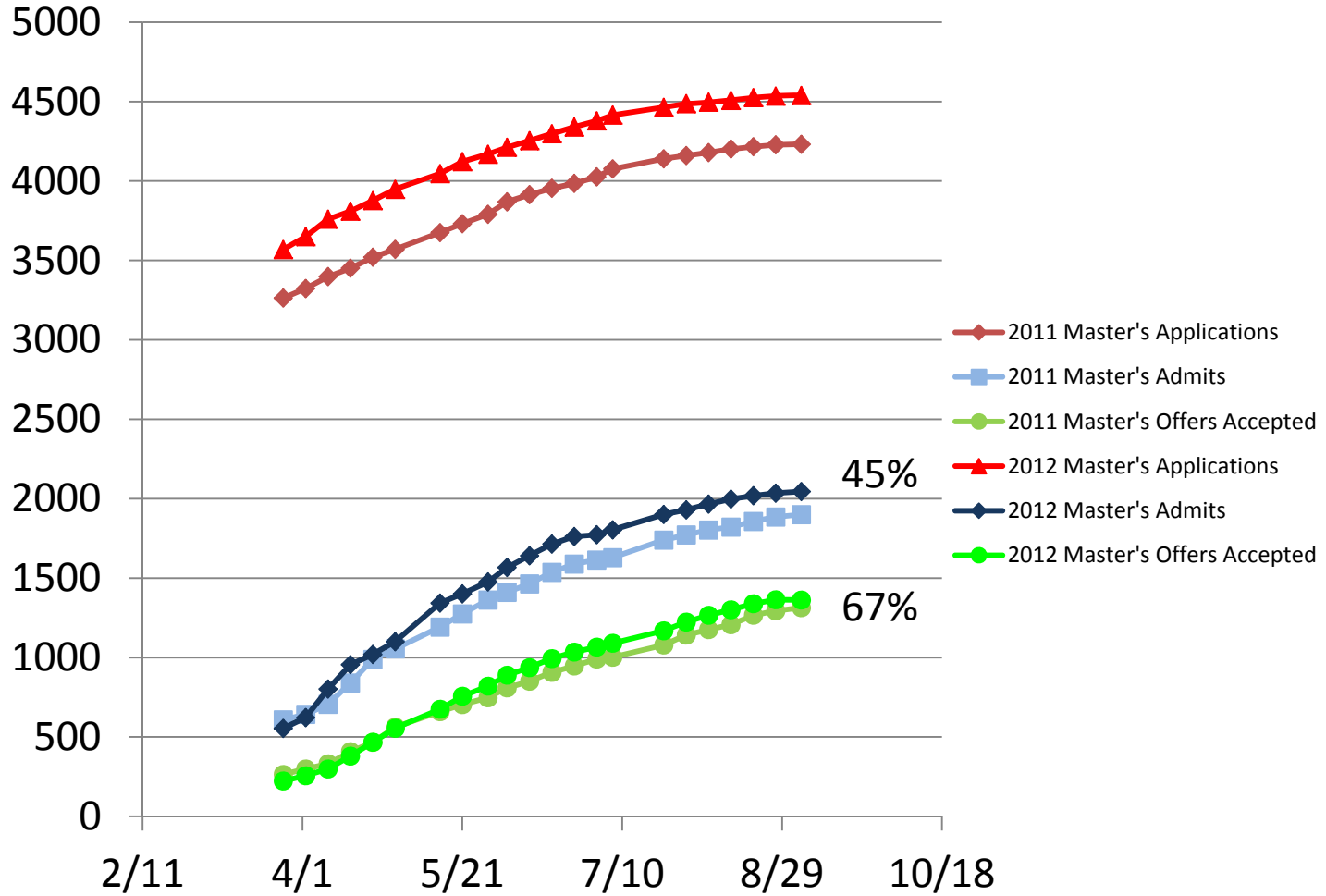
64% Female, 36% Male

73% Resident, 27% Non-resident

21% Minority, 65% White, 9% International

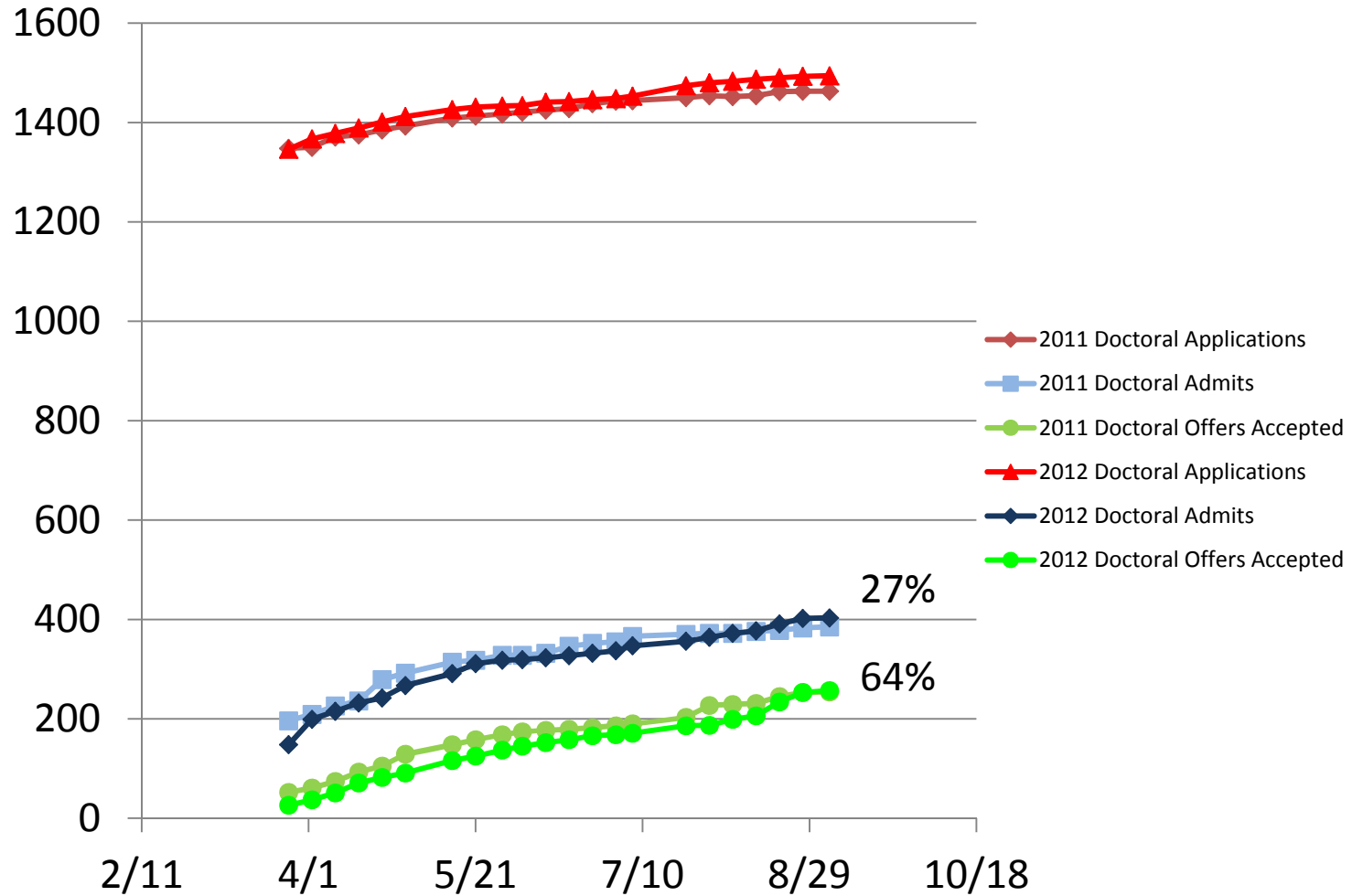
59% Full-time, 41% Part-time

# Master's Admissions Fall 2012



September 14, 2012

# Doctoral Admissions Fall 2012



September 14, 2012

# Graduate School Priority

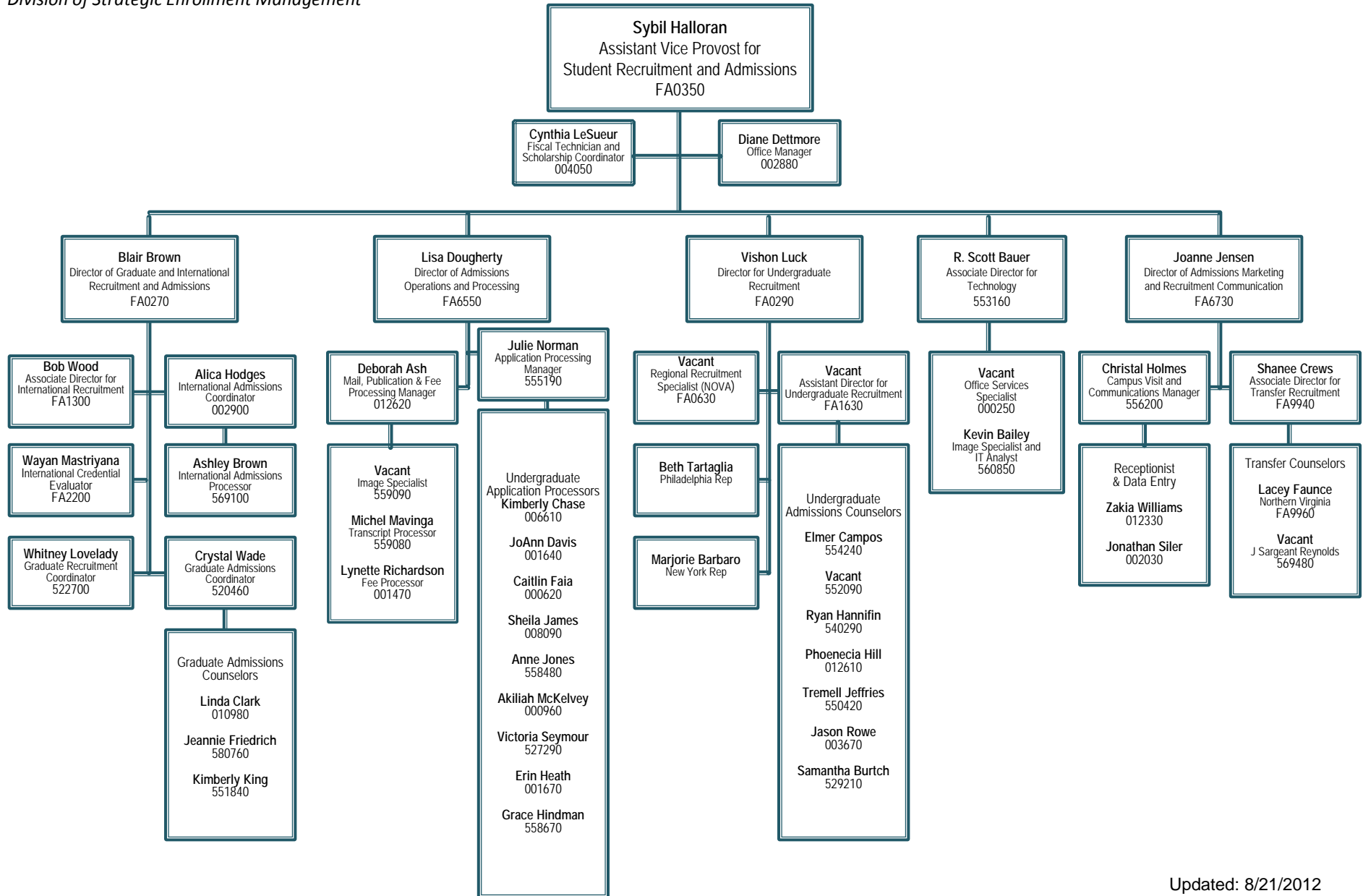
## Smooth transition of Graduate Admissions to the Office of Strategic Enrollment Management

- Luke Schultheis, Vice Provost, Division of Strategic Enrollment Management
- Sybil Halloran, Assistant Vice Provost for Student Recruitment and Admissions
- Blair Brown, Director of Graduate and International Admissions and Recruitment
- Whitney Lovelady, Crystal Wade, Linda Clark, Kimberly King, Jeannie Friedrich, Kevin Bailey

# Virginia Commonwealth University

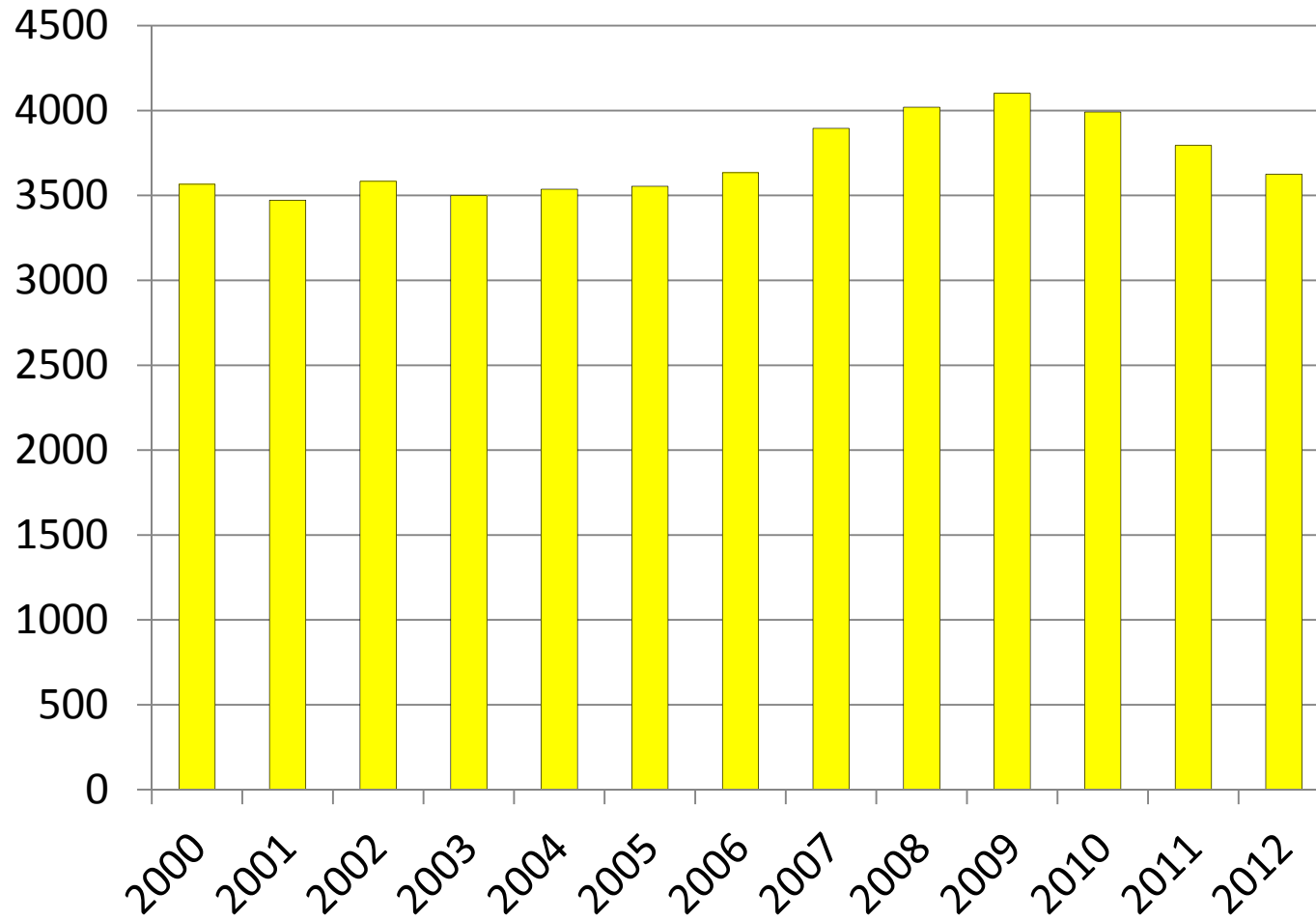
## Office of Admissions

Division of Strategic Enrollment Management



Updated: 8/21/2012

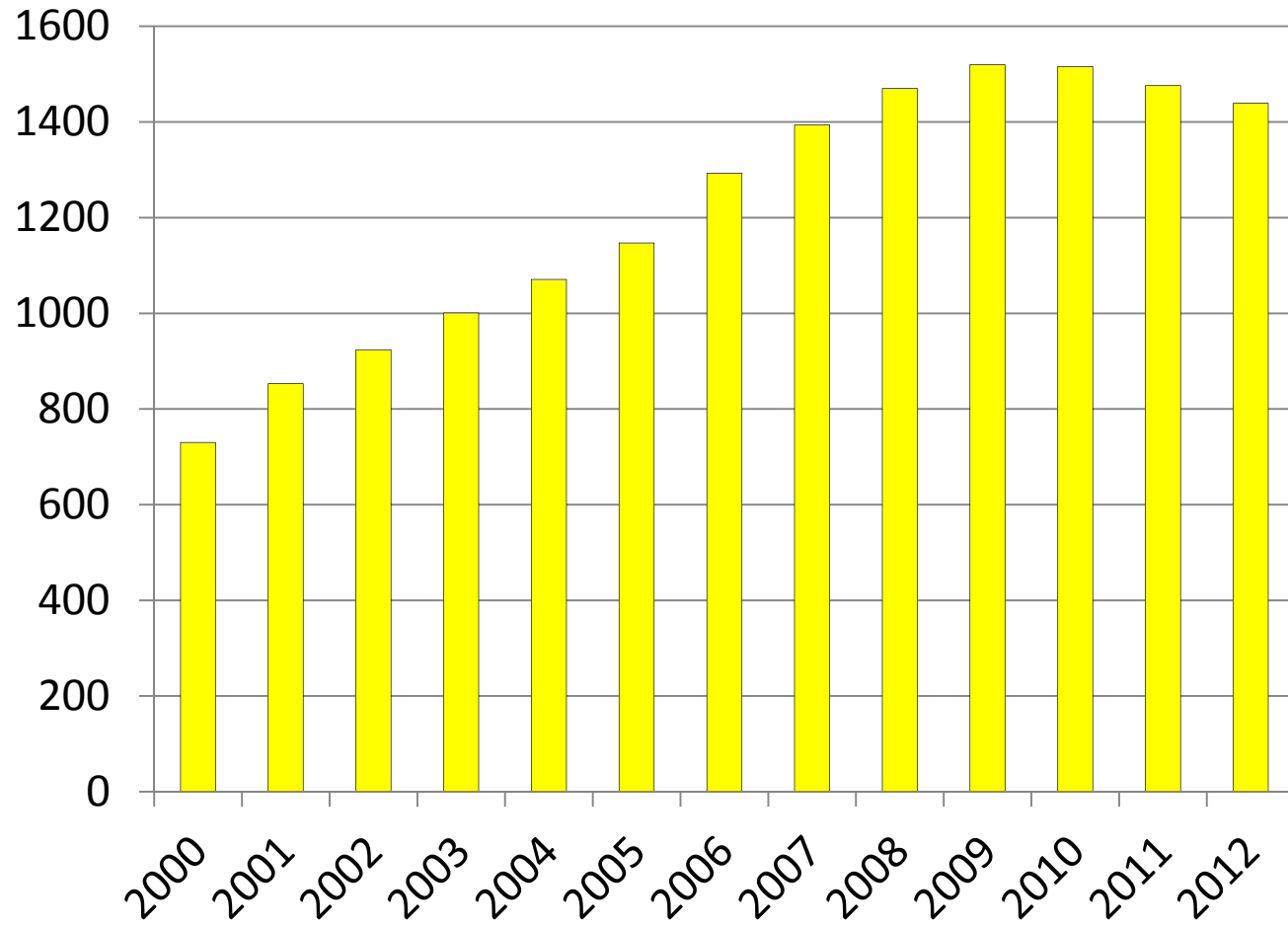
# Master's Enrollment



September 14, 2012

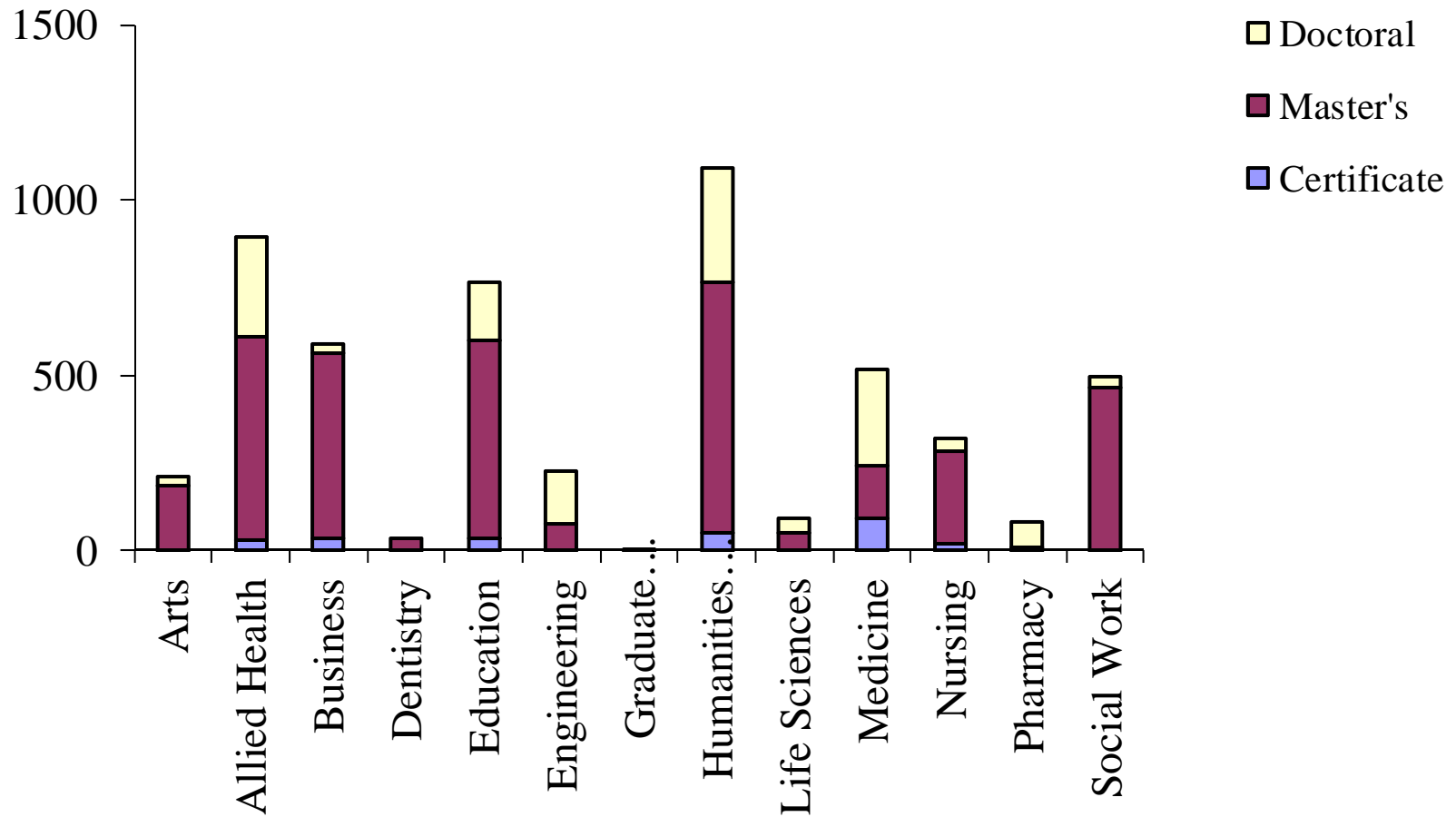


# Doctoral Enrollment



September 14, 2012

# VCU Graduate Student Enrollment Fall 2012



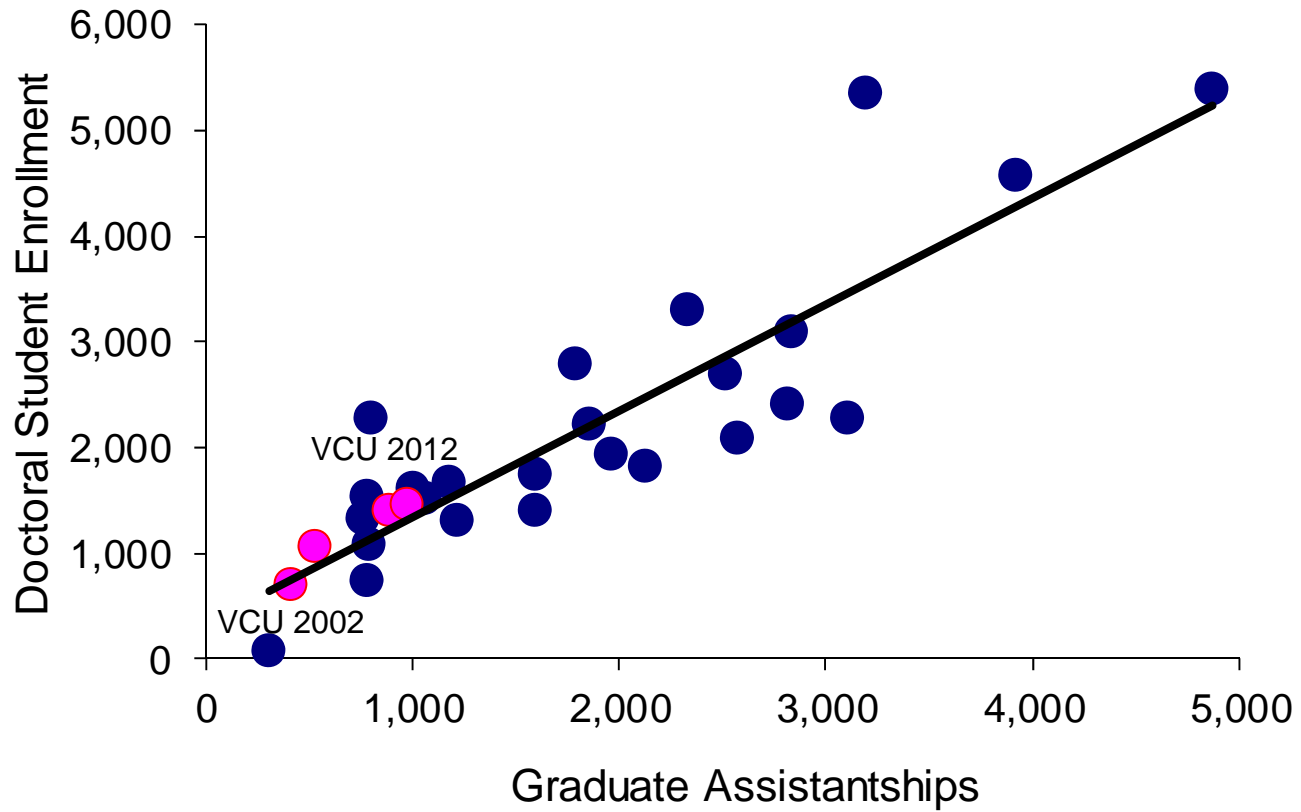
## Gaps/Challenges

- Changes in the federal student loan policies appear to have a negative impact on graduate enrollment
  - Elimination of the federal subsidized loan program will result in higher student debt potentially limiting students' ability to afford graduate education
  - Graduate students will no longer be eligible for financial loan based incentives for repaying loans on schedule
  - Effect on “academic progress”

# Graduate School Priority

- Enhance graduate student life
  - Graduate Student Association
  - National Association of Graduate and Professional Students
  - Alpha Epsilon Lambda honor society
  - Workshops
  - Health Insurance

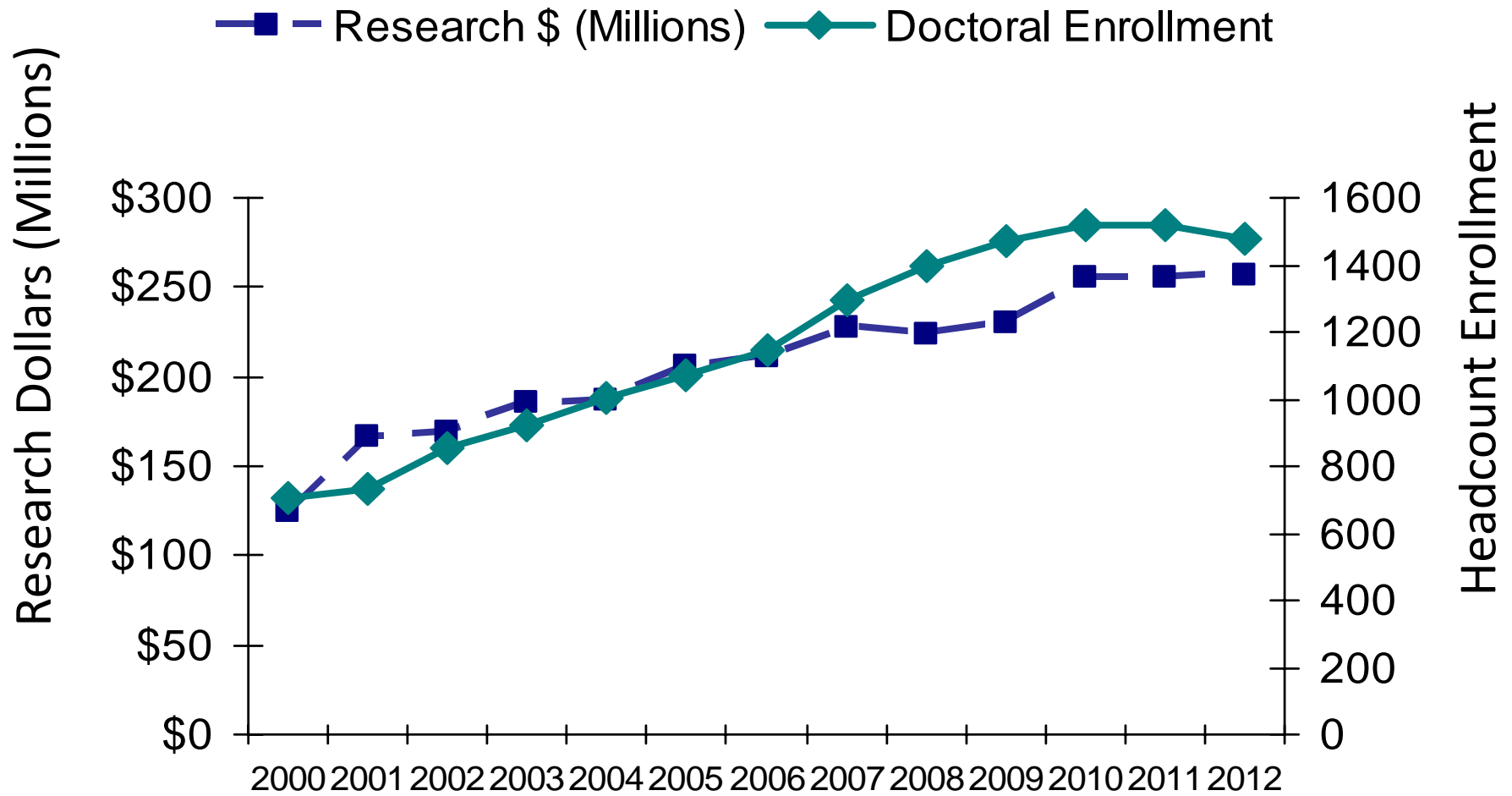
# Graduate Assistantships – VCU Peers



# Graduate Assistantship Stipends - VCU Peers

University	9 Month Stipend	12 Month Stipend
Drexel University		\$9,000 - \$20,000
University of Iowa	\$16,000 - \$19,000	\$23,000 - \$23,500
University of Louisville		\$20,000 - \$22,000
University of Virginia		\$18,500 - \$34,000
Florida State University	\$10,500 - \$17,500	\$18,500 - \$20,500
Boston University		\$17,500 - \$29,000
University of Illinois - Chicago		\$14,000 - \$28,000
University of Alabama		\$14,000 -
University of New Mexico		\$13,715 -
University of Minnesota - Twin Cities		\$13,061 - \$23,000
<b>VCU</b>	<b>\$10,000 - \$15,000</b>	<b>\$12,000 - \$23,000</b>
<b>VCU Graduate School</b>	<b>\$15,000</b>	<b>\$20,000</b>
New York University	\$22,000	\$29,000
West Virginia University	\$10,000 - \$14,400	\$18,000
University of Arizona	\$8,000 - \$17,000	
Temple University	\$14,300 - \$15,400	
University of Nevada – Reno	\$14,000 - \$15,000	
Wayne State University	\$13,000 - \$19,000	
SUNY Buffalo	\$13,000 - \$17,000	
Virginia Tech	\$12,000 - \$24,000	
University of Kentucky	\$12,000 - \$22,500	
University of Colorado	\$12,000 - \$18,500	

# Doctoral Student Enrollment and Sponsored Programs Dollars at VCU



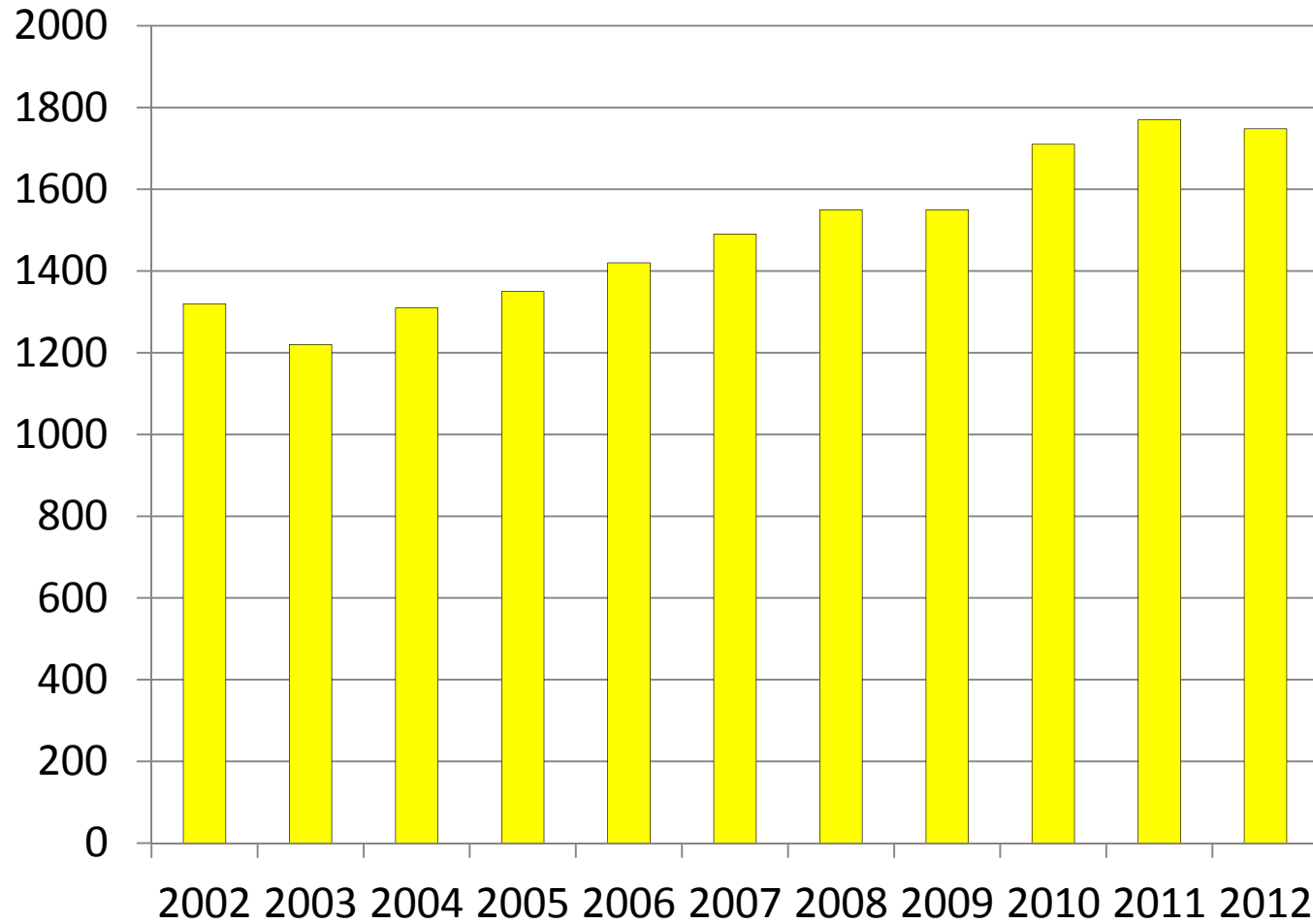
September 14, 2012

# Graduate School Priority

- Increase stipends and number of graduate assistantships
  - \$20,000 Fall 2013
  - Increase stipend by \$1,000 and add approximately 25 new GA positions each year for six years
- Tuition restructuring for GAs, TAs and RAs
  - Option 1. Reduced full-time tuition for all Graduate Assistantships
  - Option 2. Reduced tuition after candidacy for all thesis/dissertation graduate students; require full-time enrollment

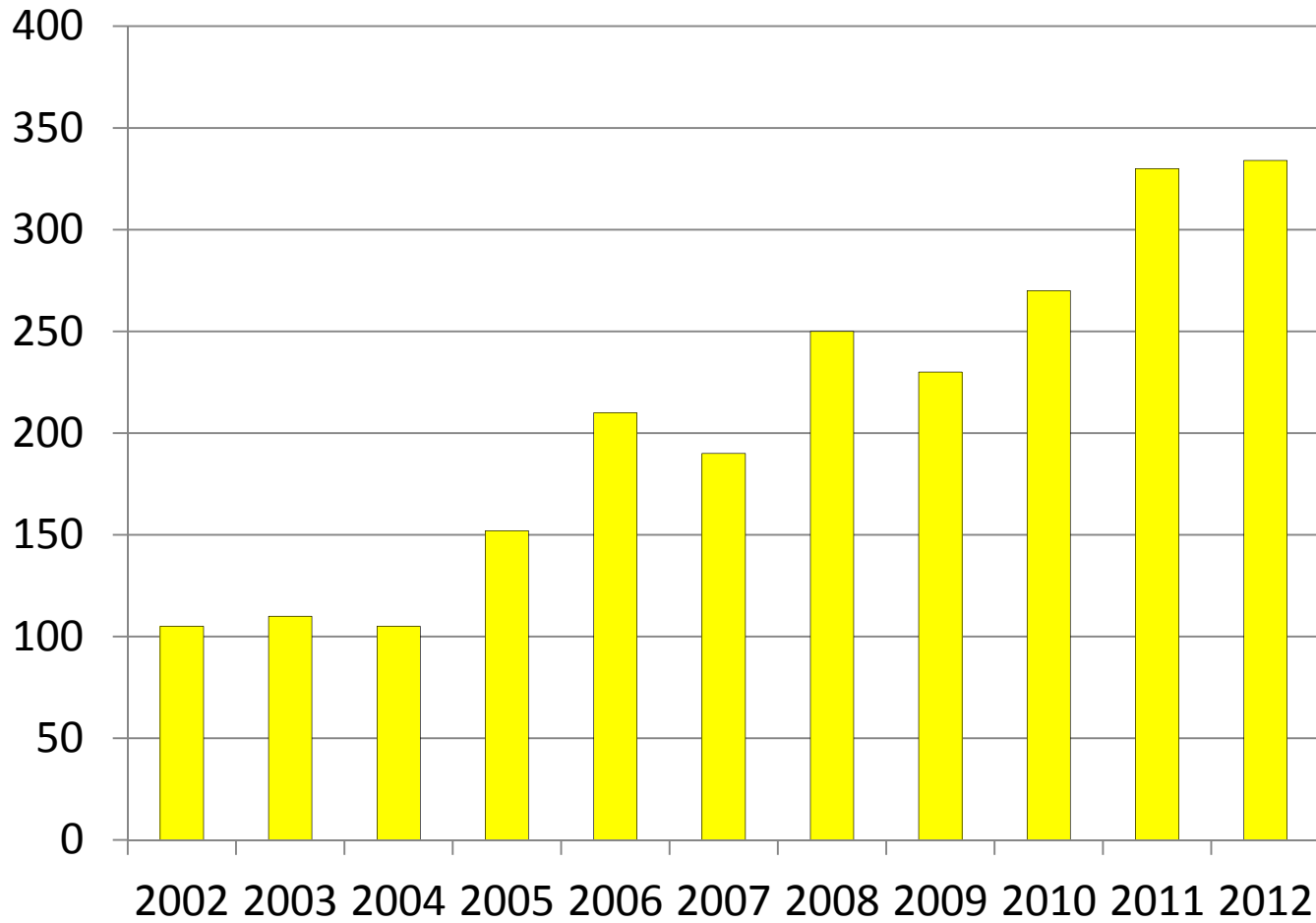


# Master's Degrees Awarded



September 14, 2012

# Doctoral Degrees Awarded



September 14, 2012

# Graduate School Priority

- Major advisors hood PhD candidates at commencement
  - Master's list condensed
- Develop a methodology to track PhD and master's students
  - Retention and graduation rates
  - Time to degree
  - Career placement

## Doctoral Graduates - Demographics

Gender	VCU	High Research Institutions	All Institutions
Male	66 (38.4%)	19,302 (54.9%)	25,548 (53.1%)
Female	106 (61.6%)	15,826 (45.0%)	22,505 (46.8%)
Unknown	0 (0%)	10 (0.0%)	16 (0.0%)

NSF/NIH/USED/USDA/NASA, 2010 Survey of Earned Doctorates  
87.2% of VCU, and 92% of all, doctoral recipients responded

## Doctoral Graduates – Demographics

Race/ethnicity	VCU	High Research Institutions	All Institutions
Am In/Ak Native	1 (0.8%)	77 (0.3%)	122 (0.4%)
Asian	10 (8.0%)	2,230 (9.9%)	2,825 (9.0%)
Black	10 (8.0%)	1,078 (4.8%)	2,002 (6.3%)
Hispanic	7 (5.6%)	1,312 (5.8%)	1,850 (5.9%)
White	93 (74.4%)	16,955 (75.0%)	23,508 (74.5%)
Two or more races	2 (1.6%)	504 (2.2%)	670 (2.1%)
Other/unknown	2 (1.6%)	461 (2.0%)	593 (1.9%)

NSF/NIH/USED/USDA/NASA, 2010 Survey of Earned Doctorates  
U.S. citizen or permanent visa

September 14, 2012

## Doctoral Graduates - Graduate Study

Fields of Study	VCU	High Research Institutions	All Institutions
Life Sciences	81 (47.1%)	8,407 (23.69%)	11,266 (23.4%)
Physical Sciences	8 (4.7%)	6,731 (19.2%)	8,319 (17.3%)
Social Sciences	25 (14.5%)	5,213 (14.8%)	7,771 (16.2%)
Engineering	16 (9.3%)	6,202 (17.7%)	7,552 (15.7%)
Education	30 (17.4%)	2,727 (7.8%)	5,294 (11.0%)
Humanities	5 (2.9%)	3,935 (11.2%)	4,979 (10.4%)
Other Fields	7 (4.1%)	1,923 (5.5%)	2,888 (6.0%)

NSF/NIH/USED/USDA/NASA, 2010 Survey of Earned Doctorates

September 14, 2012

# Doctoral Graduates – Post Graduation Employment

Post-graduation Employment	VCU	High Research Institutions	All Institutions
Post-Doctoral Study	40 (28.8%)	10,116 (32.0%)	12,421 (29.1%)
Academe	21 (15.1%)	6,266 (19.8%)	8,701 (20.4%)
Government	10 (7.2%)	998 (3.2%)	1,499 (3.5%)
Industry/Business	9 (6.5%)	2,866 (9.1%)	3,672 (8.6%)
Nonprofit	5 (3.6%)	495 (1.6%)	844 (2.0%)
Seeking Employment/Study	34 (24.5%)	8,923 (28.2%)	12,331 (28.9%)
Other	16 (14.4%)	1,950 (6.2%)	3,154 (7.4%)

NSF/NIH/USED/USDA/NASA, 2010 Survey of Earned Doctorates

September 14, 2012

## Doctoral Graduates – Debt Level

Debt Level	VCU	High Research Institutions	All Institutions
None	78 (52.7%)	17,711 (54.2%)	23,052 (52.3%)
\$30,000 or less	34 (23.0%)	8,125 (24.9%)	10,559 (23.9%)
More than \$30,000	36 (24.3%)	6,816 (20.9%)	10,485 (23.8%)

NSF/NIH/USED/USDA/NASA, 2010 Survey of Earned Doctorates

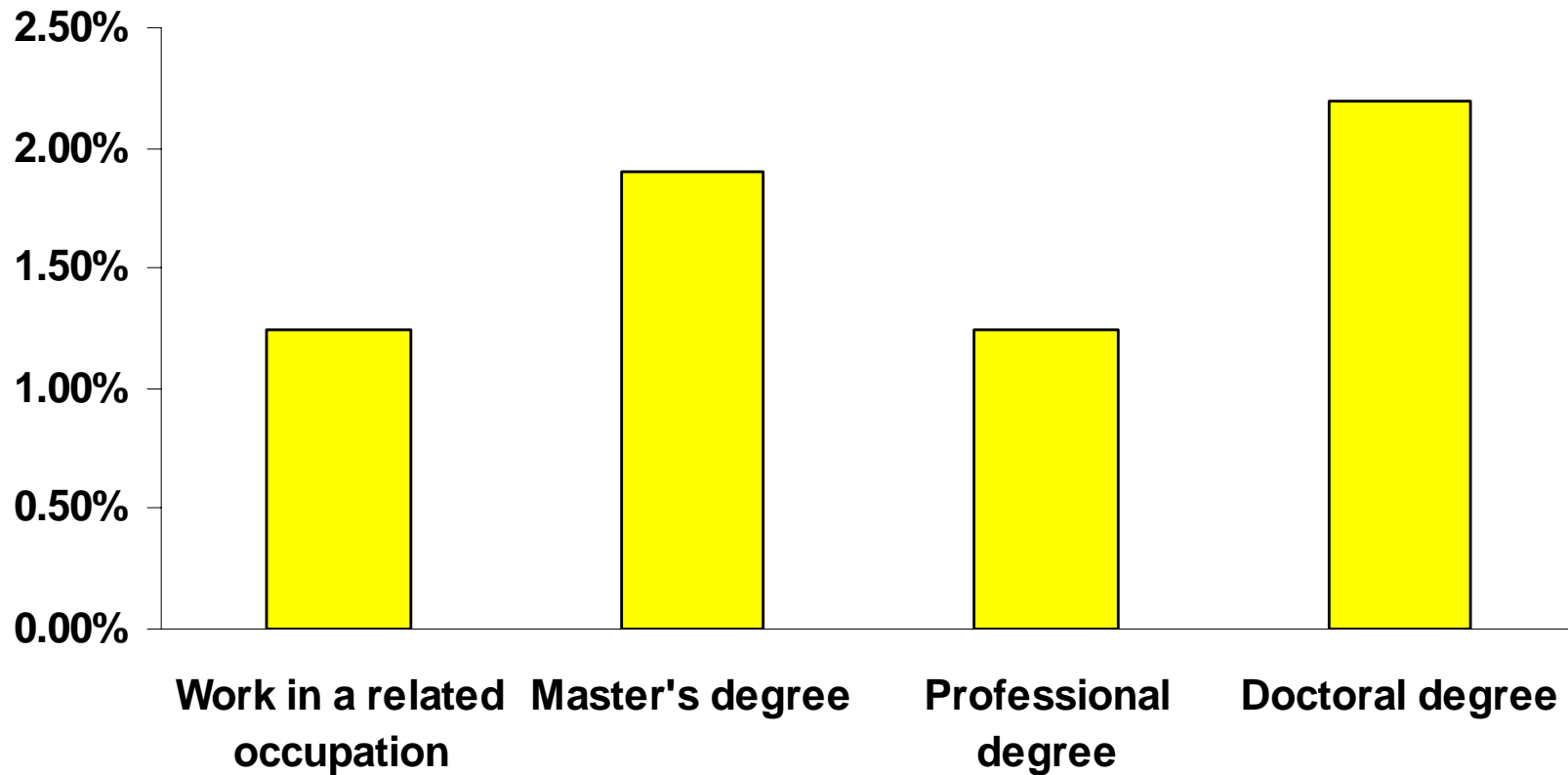


# Graduate School Priority

- Develop Preparing Future Leaders and Entrepreneurs program
  - CGS Pathways Through Graduate School and Into Careers
  - NIH Biomedical Workforce Task Force Report
  - NRC Report on the Future of U.S. Research Universities
  - NSF/NIH/USED/USDA/NASA, Survey of Earned Doctorates - 40% of VCU PhD graduates to university/college positions

# Annual Average Projected Job Growth

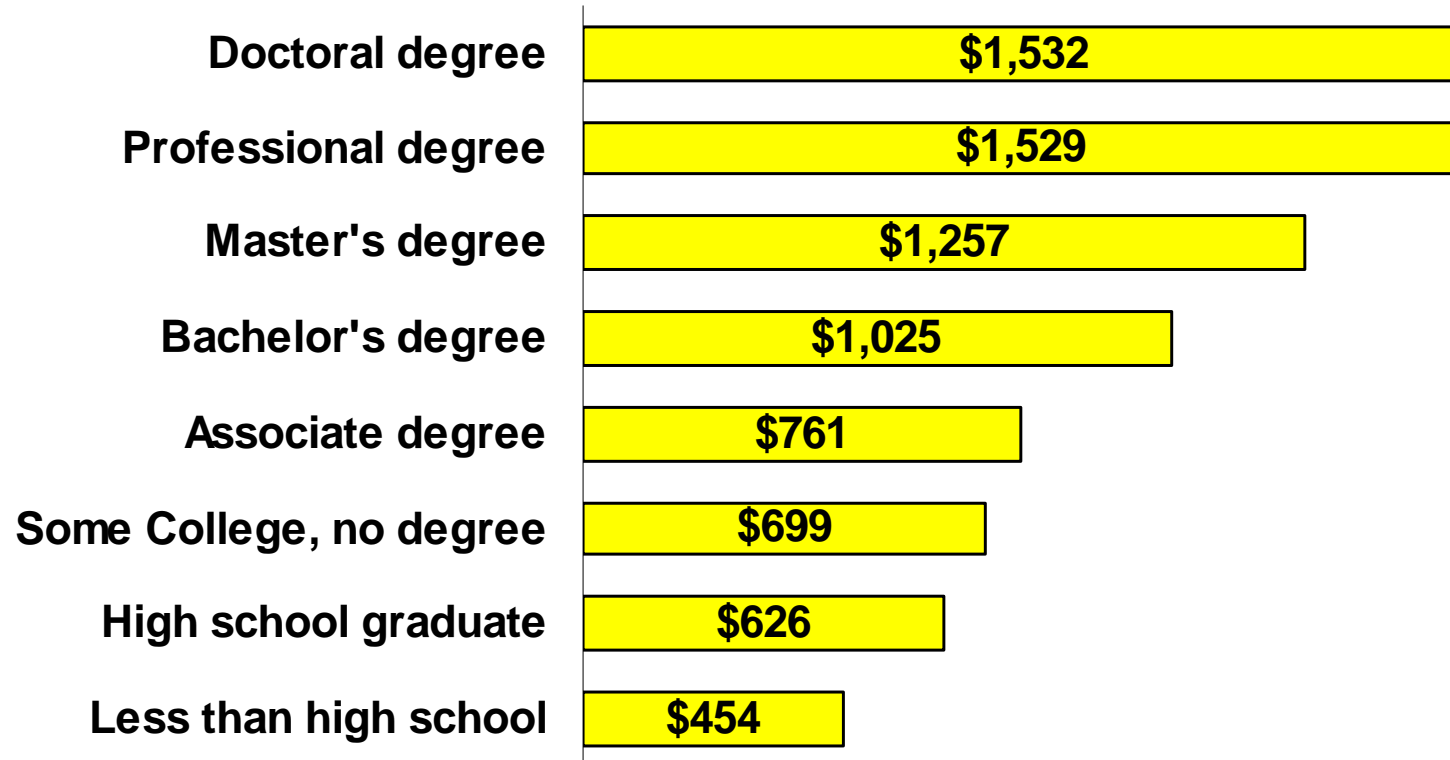
By Training Required 2004-2014 for Virginia



JobsEQ®

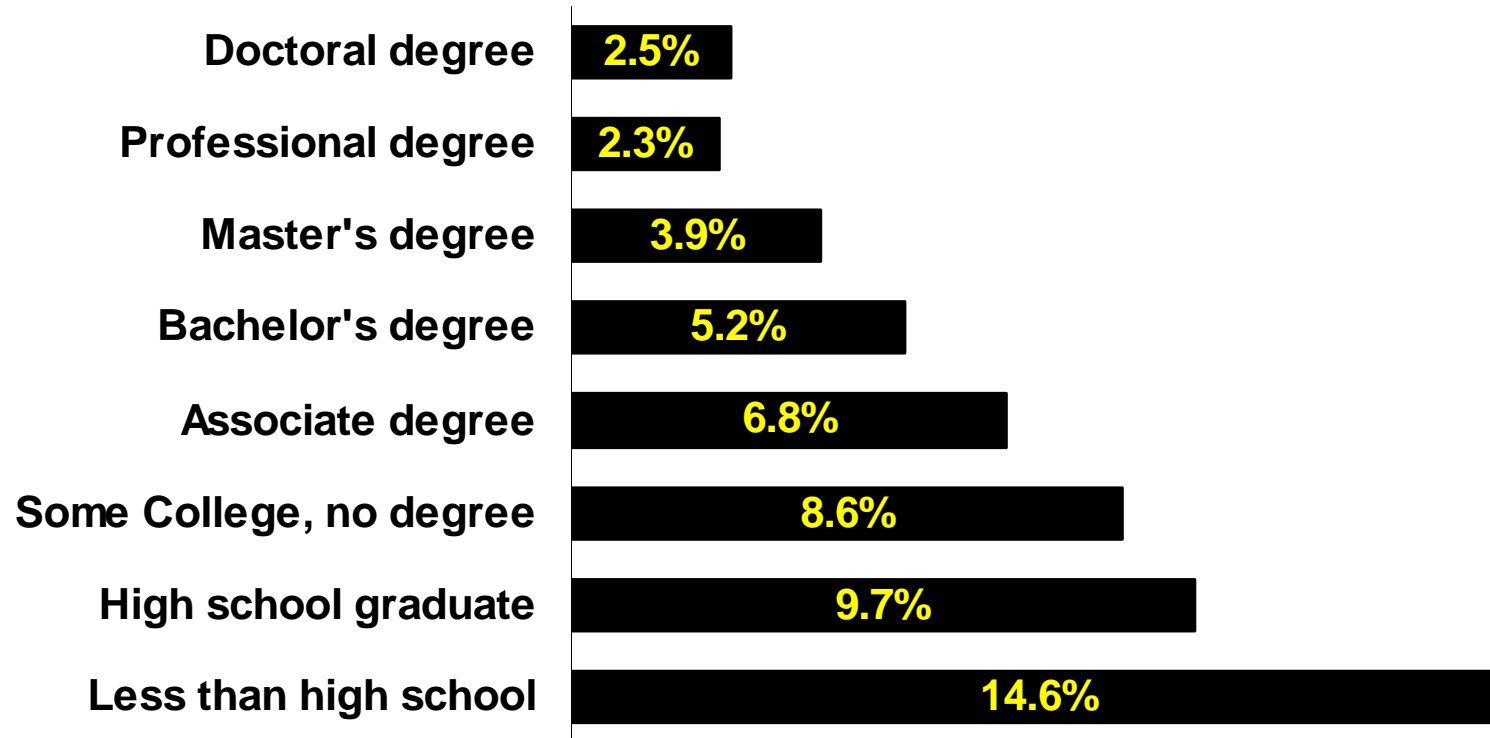
September 14, 2012

# Median Weekly Earnings in 2009



U.S. Bureau of Labor Statistics  
Occupational Outlook Quarterly · Summer 2010

# Unemployment rate in 2009



U.S. Bureau of Labor Statistics  
Occupational Outlook Quarterly · Summer 2010

## New Graduate Degree Programs

- PhD in Healthcare Policy and Research
- PhD in Mechanical and Nuclear Engineering - SCHEV
- PhD in Electrical and Computer Engineering – SCHEV
- PhD in Nursing – hybrid program
- PhD in Education; Sport Leadership
- PhD in Clinical and Translational Sciences; Cancer and Molecular Medicine
- Master of Management – online program
- PhD in Special Education and Disability Policy
- MBA Concentration in Health Care Management
- M.S. in Information Systems; Information Risk, Security and Assurance
- PhD in Pathology – terminated

# Graduate School Priority

- Support development of on-line courses and programs
- Opportunities at the master's level
- Opportunities at the doctoral level
- Curriculum Forms:  
[www.graduate.vcu.edu/facultyresources/gradcouncil/committee/index.html](http://www.graduate.vcu.edu/facultyresources/gradcouncil/committee/index.html)

# Virginia Commonwealth University Graduate School

**1001 Grove Avenue**

**PO Box 843051**

**Phone: 828-2233**

**[www.graduate.vcu.edu](http://www.graduate.vcu.edu)**

